

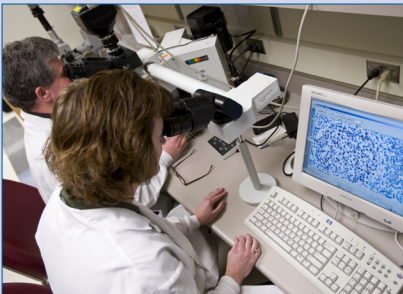
# Mayo Clinic Conference on Systems Engineering & Operations Research in Health Care

**August 10 - 12, 2011**

Phillips Hall  
Siebens Building  
Rochester, MN

*Course Directors:*

Mark J. Hayward, M.S.  
Janine R.A. Kamath, M.B.A., M.A.  
John B. Osborn, M.Sc.  
Thomas R. Rohleder, Ph.D.  
Veronique L. Roger, M.D.



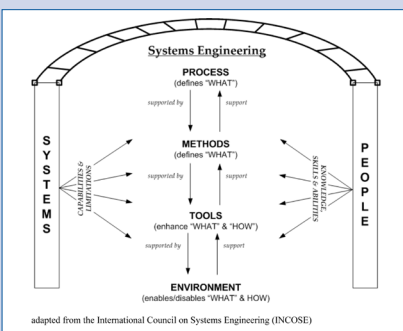
The 4th Annual Conference on Systems Engineering & Operations Research in Health Care will take place August 10th - 12th on the Mayo Clinic campus in Rochester, Minnesota. Conference attendees will have the opportunity to join colleagues in discussion on how clinicians and SE/OR/OM practitioners and academics can collaborate to address the challenges faced by the health care industry to deliver patient care that is high quality, safe, effective and efficient, and affordable through the application of advanced analytical methods and tools.

*This unique conference offers:*

- Presentations from health care professionals, operations research/management practitioners, and academic faculty and students
- Networking with colleagues in health care, practice and academia
- Pre-conference tutorials
- Tours of Mayo Clinic systems and operations
- Continuing medical education credit for physicians (AMA PRA Category 1 Credits™)

## MARK YOUR CALENDAR TODAY!

A poster session for presentation of original research dedicated to the field of health systems engineering and operations research applied to health care will be held. Any projects that pertain to the training and practice of **Patient Access, Medical Decision Making, Quality Control/Improvement, Health Care Resources Management, Patient Flow, Simulation and Optimization** are welcome. They may include statistical and mathematical modeling analyses, outcome studies, practice innovations, or descriptive analyses. Posters will be chosen from all abstracts received by the **June 15th, 2011** submission deadline. Visit our conference website for details on registration and submission of a poster abstract <http://www.mayo.edu/cme/special-topics-in-health-care-2011r092>



**In association with Production and Operations Management Society and Society for Health Systems.**

